

SECTION 1 ROTARY VALVES

Type 2, Round Flange

PRODUCT DESCRIPTION

The Smoot Type 2 rotary valve is designed to handle moderately abrasive materials. The Type 2 is constructed with a cast iron housing with hard chrome plating on the interior machine surfaces to provide a long lasting, economical rotary valve.

PRODUCT FEATURES

- Abrasion-resistant
- Constructed of cast iron housing with hard chrome plated on interior machined surfaces
- Closed end carbon steel rotor with replaceable hardened steel tips
- Includes HiPres Shaft Air Purge assembly, including filter, regulator, pressure gauge, NEMA 4 solenoid, hose and fittings



OPTIONS

- Relieved tips and rotor shrouds
- High temperature modifications
- Reduced capacity rotors
- Low pressure cavity air purge
- Zero speed switches
- Sand blast preparation and custom paint
- Motor mounting brackets
- Teflon rotors available

SAFETY NOTICE

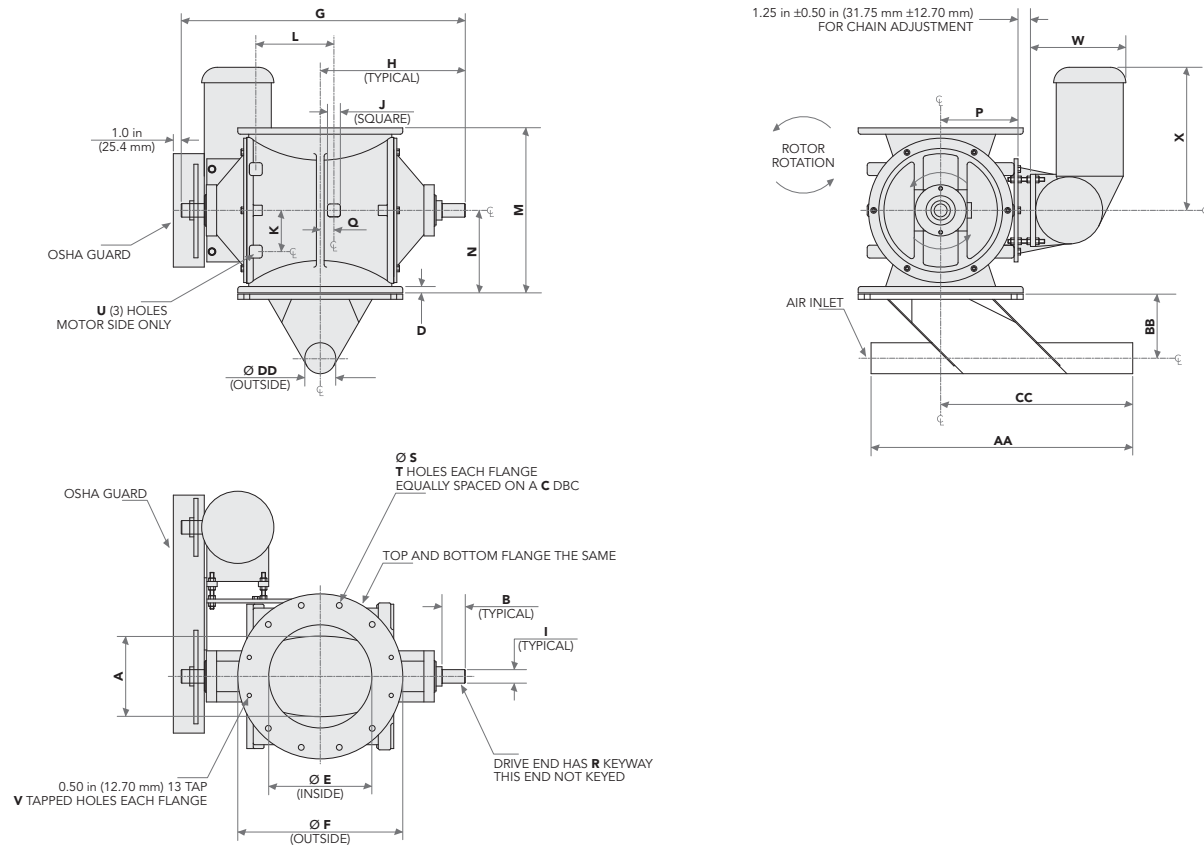
Design Engineers • Technicians • Installers

SAFETY NOTICE

The inlet and outlet of the rotary valve must have proper attachments to prevent anyone from being able to insert their hands, or foreign objects, into the valve when in operation.

SECTION 1 ROTARY VALVES

Type 2, Round Flange



Feeder Dimensions
(Round Flange)

	FTP9	FTP12
A	5-3/4	7-3/4
B	1-3/4	2-1/4
C	11-3/4	14-1/4
D	5/8	5/8
E	8	10
F	13-1/2	16
G	21-3/8	28-1/8
H	10-11/16	14-1/16
I	1	1-1/2
J	1	1-1/4
K	2-1/2	4
L	4-1/4	6-1/4
M	12-7/8	15-7/8
N	6-7/16	7-15/16

Feeder Dimensions
(Round Flange)

	FTP9	FTP12
P	6-1/4	7-1/2
Q	0	0
R	1/8x1/4	1/8x1/4
S	9/16	9/16
T	8	8
U	3/8-16	3/8-16
V	0	4
Net Cu. Ft. Dispersed Per Revolution		
	FTP9	FTP12
Closed End Rotor	0.21	0.64
Shipping Weight With Motor (lbs.)		
	FTP9	FTP12
	225	340

For Electric Motor Dimensions, contact The Service Center.

SAFETY NOTICE

The inlet and outlet of the rotary valve must have proper attachments to prevent anyone from being able to insert their hands, or foreign objects, into the valve when in operation.

Design Engineers • Technicians • Installers

SAFETY NOTICE