



ROTARY AIRLOCK VALVES

WIFI 394

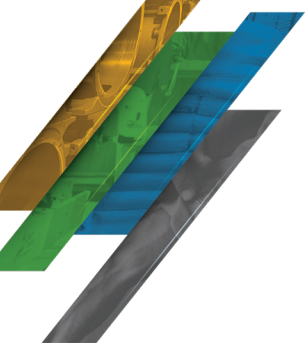
The WFI 394 was originally designed to be used on the discharge of Wheelabrator bag houses. This success is now seen on the discharge of all brand bag houses.

Features

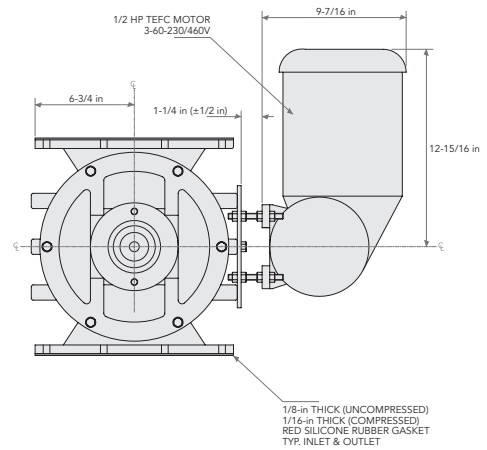
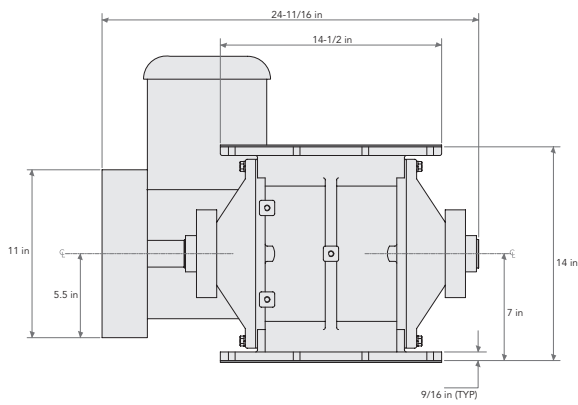
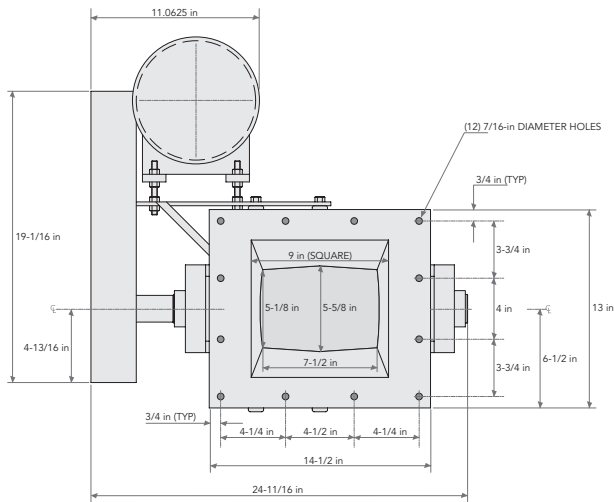
- Valve is available in two temperature ratings: <math><250^{\circ}\text{F}</math> or <math><650^{\circ}\text{F}</math>
- Chain drive
- Economical solution for dust collection applications
- Breakaway rotor sprocket to prevent motor damage



Engineering, Design & Manufacturing
to Keep the Line Moving



ROTARY AIRLOCK VALVES



©2018 Magnum Systems, Inc. All rights reserved. Catalog number MS.4012.1018